

ELUXEO[®] EB-710US

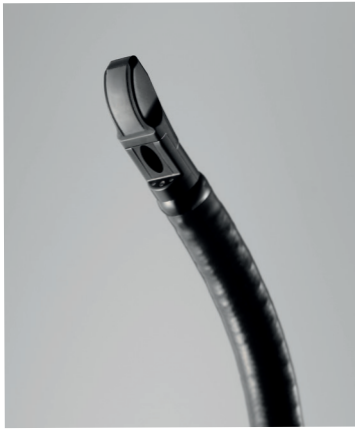
ULTRASONIC BRONCHOSCOPE



NEW

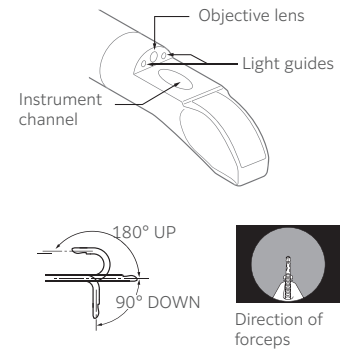


ELUXEO EB-710US ULTRASONIC BRONCHOSCOPE



Viewing direction	10° (Forward Oblique)* ¹
Field of view	120°
Observation range	2-50 mm
Bending capability	Up 180° / Down 90°
Ø Distal end	6.4 mm
Ø Insertion tube	5.9 mm
Min. Ø instrument channel	2.2 mm
Working length	610 mm
Total length	890 mm
Compatible Processors/ Light Source	EP-8000, VP-7000/BL-7000, EP-6000
Compatible Ultrasonic Processor	SU-1
Compatible Diagnostic Ultrasound System	ARIETTA™ 750
Sterilisation	STERRAD®* ² /EOG

Compatible with low temperature plasma sterilisation.



Designed to reach more peripheral areas of the lung

180° up angulation supports better EBUS observation without balloon.



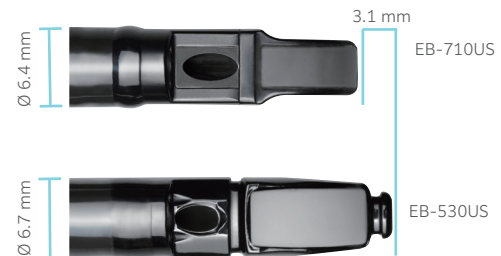
EB-710US



EB-530US

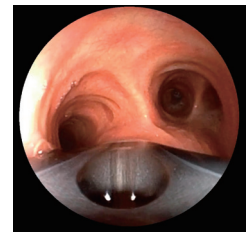
6.4mm distal end diameter, 2.2mm diameter instrument channel outlet

Short and thin distal end design support better insertion ability.



Instrument channel outlet in endoscopic view

The CMOS image sensor is located on the proximal side of the instrument channel outlet and devices can be seen in endoscopic view, which support clinical diagnosis, puncture and/or treatment.

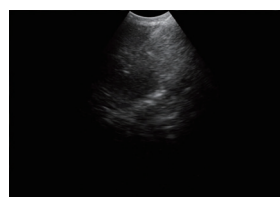


Endoscopic image with
VP-7000 and BL-7000

The high performance ultrasound transducer

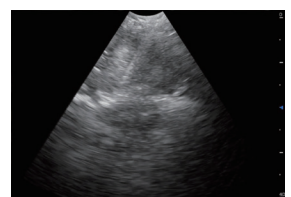
Improved resolution and penetration provide a clear ultrasound image.

EB-530US



Ultrasound image with SU1

EB-710US



Ultrasound image with SU1

*¹ This means the same as "oblique view".

*² STERRAD® Systems provided by Advanced Sterilization Products, Inc.



Manufactured and distributed by
FUJIFILM Corporation
26-30, Nishiazabu 2-chome, Minato-ku,
Tokyo 106-8620, JAPAN
www.fujifilm.com

Authorised Representative
FUJIFILM Healthcare Europe GmbH
Balcke-Dürr-Allee 6, 40882 Ratingen, Germany

Importer
FUJIFILM Europe B.V.

©2025 FUJIFILM Healthcare Europe GmbH

Specifications are subject to change without notice.
All brand names or trademarks are the property of their
respective owners.
In some countries, regulatory approval may be required
to import medical devices.
For proper use of the products, be sure to read the
instruction for use prior to use.
For the availability of these products, please contact your
local sales representatives.