

SIMPLIFYING ESD

Advancing endoscopy





CONTENT

PRODUCTS

Hoods	4
ClutchCutter	6
FlushKnife	8
Tracmotion	10
Water Pump	12
Accessories	14
Endoscopes	17
Light Sources & Processors	21
Training Model	24

ST HOODS



ST Hoods have a transparent, small caliber tip, maintaining a clear field of view.

- Providing a clear and stable view by maintaining the distance between the distal end and mucosal layer
- Side holes for better drainage of fluid to maintain a clear endoscopic view
- Sterile and single-use for better infection control
- Guide groove (available with DH-33GR and DH-34CR) to stabilise endotherapeutic devices

Model	Material code	Characteristics	Ø Outer (mm)	Ø Inner tip (mm)	Tip length (mm)	Accessory guide	Applicable endoscopes	Unit
DH-28GR	16426426	Transparent; silicone rubber, polycarbonate resin	11.5	8.0	7.0	Without	EG-840T EG-760Z EG-600ZW EC-740T/M, L	5
DH-29CR	16426438	Transparent; silicone rubber, polycarbonate resin	12.4	8.0	7.0	Without	EG-860P/M, L EG-760CT EC-760P-V/M, L	5
DH-30CR	16426440	Transparent; silicone rubber, polycarbonate resin	13.8	8.0	7.0	Without	EC-860S/M, I, L EC-760R-V/M, I, L EC-760ZP-V/M, L EC-760Z-V/M, L EC-720R/M, I, L EC-600WM/WI/WL EC-600ZW/M, L	5
DH-33GR	16635493	Transparent; guide type; silicone rubber, polycarbonate resin	11.8	7.0	7.0	Yes	EG-840T EG-760Z EG-760CT EC-740T/M, L	5
DH-34CR	16635508	Transparent; guide type; silicone rubber, polycarbonate resin	13.6	7.0	7.0	Yes	EC-860P/M, L EC-760R-V/M, I, L EC-760ZP-V/M, L EC-600WM/WI/WL	5
NEW DH-083ST	16833411	Transparent; silicone rubber, polycarbonate resin	9.5	7.0	3.5	Without	EG-840TP	5
NEW DH-106STL	16833423	Transparent; silicone rubber, polycarbonate resin	11.6	8.0	6.0	Without	EG-840T EG-760Z EC-740T/ M, L	5
NEW DH-116STL	16833435	Transparent; silicone rubber, polycarbonate resin	12.6	8.0	6.0	Without	EG-760CT EC-860P/M, L EC-760P-V/ M, L	5
NEW DH-126STL	16833447	Transparent; silicone rubber, polycarbonate resin	13.7	8.0	6.0	Without	EC-760R-V/ M, I, L EC-760ZP-V/ M, L	5



DH-28GR



DH-29CR



DH-30CR



DH-33GR



DH-34CR



DH-083ST



DH-106STL



DH-116STL



DH-126STL

OBSERVATION HOODS



Model	Material code	Characteristics	Ø Outer (mm)	Ø Inner tip (mm)	Tip length (mm)	Applicable endoscopes	Unit
DH-17EN2	16783393	Transparent, sterilised with EOG	11.5	8.5	1.5	EI-580BT, EN-580T	10
DH-32EN	16516594	Transparent, sterilised with EOG	9.7	5.0	1.5	EI-580BT, EN-580T, EN-580XP	10



DH-17EN2



DH-32EN

TOP ENDOSCOPIC HOODS*

THIRD PARTY PRODUCT

The slit and drainage hole allows fluid to drain away quickly.

Model	Material code	Characteristics	Ø Outer (mm)	Tip length (mm)	Applicable endoscopes	Unit
SHS	70100142568	Soft and transparent	8.6 – 9.8		EG-860R EG-840T EG-760R	5
SHM	70100139249	Soft and transparent	9.8 – 10.6		EG-840T EG-760Z EG-760CT EC-740T/M, L	5
SHL	70100139248	Soft and transparent	10.6 – 12.6		EC-860P/M, L EC-760R-V/M, I, L EC-760ZP-V/M, L EC-760P-V/M, L	5
SHLL	70100143067	Soft and transparent	12.6 – 14.0		EC-860S/M, I, L EC-760Z-V/M, L	5
SHM-B	70100139250	Soft and black	9.8 – 10.6		EG-840T EG-760Z EG-760CT EC-740T/M, L	5
SHL-B	70100139251	Soft and black	10.6 – 12.6		EC-860P/M, L EC-760R-V/M, I, L EC-760ZP-V/M, L EC-760P-V/M, L	5
SHF-020	70100139655	Hard and transparent	9.8	7.0	EG-840T EG-760Z EC-740T/M, L	5
SHF-035	70100139658	Hard and transparent	10.8	7.0	EG-760CT EC-760P-V/M, L	5
SHF-045	70100141234	Hard and transparent	11.5	7.0	EC-860P/M, L EC-760R-V/M, I, L	5
SHF-050	70100139656	Hard and transparent	12.2	7.0	EC-760ZP-V/M, L	5
SHF-055	70100139657	Hard and transparent	13.2	7.0	EC-860S/M, I, L EC-760Z-V/M, L	5



SHS / M / L / LL



SHM-B / L-B



SHF

* Manufactured by Top Corporation, Japan. Not for sale in Canada.

CLUTCHCUTTER

The 3-in-1 ESD tool for various techniques

The ClutchCutter is a well proven endoscopic mucosal dissection tool that can enable the user to grasp, and electrically dissect and coagulate the mucosa of the upper and lower GI tract.

In procedures that need to be performed perpendicular to the muscular layer, the ClutchCutter makes it possible to grasp, lift up and incrementally dissect the tissue.

ClutchCutter

**TOOTHED JAWS TO GRIP
THE MUCOSA EFFICIENTLY**

**ROTATABLE DISTAL JAWS FOR
A PRECISE LESION APPROACH**

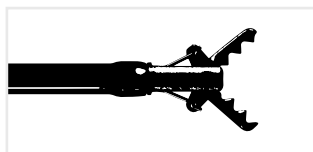
**INSULATED OUTER EDGE TO REDUCE
RISK OF DAMAGING LOCAL TISSUE**



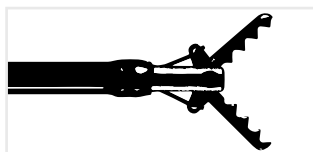
CLUTCH CUTTER ESD KNIFE



Model	Material code	Characteristics	Identifier	Knife length (mm)	Working length (mm)	Ø Working channel (mm)
DP2618DT - 35 -	16444210	ESD Scissor	- 35 -	3.5	1,800	2.8 or more
DP2618DT - 50 -	16444222	ESD Scissor	- 50 -	5.0	1,800	2.8 or more



DP2618DT - 35 -: 3.5 mm jaw length



DP2618DT - 50 -: 5.0 mm jaw length

3-in-1 ability

All stages of ESD can be performed with this 3-in-1 tool, from marking to making incisions and coagulating.



1. Incision



2. Dissection



3. Coagulation

FLUSHKNIFE

FlushKnife **NS**

FlushKnife **BTS**

**Enhanced usability
ideal for all physicians**

One knife covers everything from marking (coagulation), dissection to arrest of bleeding. The high versatility of this knife improves the efficiency of the procedure by reducing the exchange of instruments during the procedure.

THINNER SHEATH FOR ENHANCED SUCTION PERFORMANCE¹

EXCELLENT MANOEUVRABILITY AND STABILITY²

FLUID SUPPLY CAPABILITY WITH WATER PUMP JW-3

1. Due to tapered catheter design between distal section and handle to increase working channel lumen.

2. Due to increased catheter diameter on the distal section to secure stable position in the working channel.



FLUSHKNIFE BTS



FlushKnife BTS has a ball tip which touches a wider range of tissue and supports effective coagulation.

Model	Material code	Characteristics	Identifier	Colour code	Knife length (mm)	Working length (mm)	Ø Working channel (mm)
DK2620JI-B15- DK2620JI-B20- DK2620JI-B25- DK2620JI-B30-	16659607 16659619 16659621 16659633	Ball tip, Slim Type	- B15 - - B20 - - B25 - - B30 -	Green Blue Yellow Black	1.5 2.0 2.5 3.0	2,000	2.8 or more
DK2623JI-B15- DK2623JI-B20-	16659669 16659671	Ball tip, Long slim type	- B15 - - B20 -	Green Blue	1.5 2.0	2,300	2.8 or more

FLUSHKNIFE NS

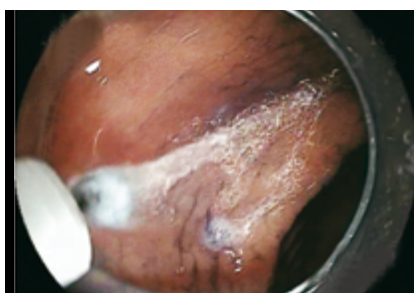


FlushKnife NS has a slim needle shaped tip.

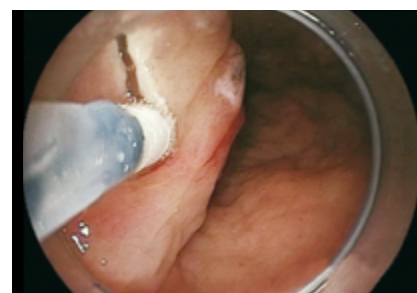
Model	Material code	Characteristics	Identifier	Colour code	Knife length (mm)	Working length (mm)	Ø Working channel (mm)
DK2620JI-N10- DK2620JI-N15- DK2620JI-N20- DK2620JI-N25- DK2620JI-N30-	16659554 16659566 16659578 16659580 16659592	Needle tip, Slim Type	- N10 - - N15 - - N20 - - N25 - - N30 -	White Green Blue Yellow Black	1.0 1.5 2.0 2.5 3.0	2,000	2.8 or more
DK2623JI-N15- DK2623JI-N20-	16659645 16659657	Needle tip, Long slim type	- N15 - - N20 -	Green Blue	1.5 2.0	2,300	2.8 or more



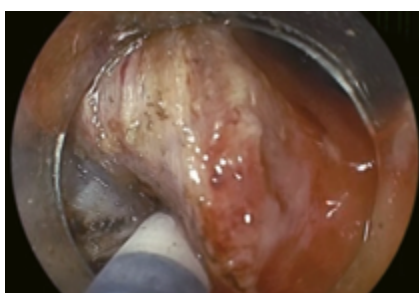
1. Marking (coagulation)



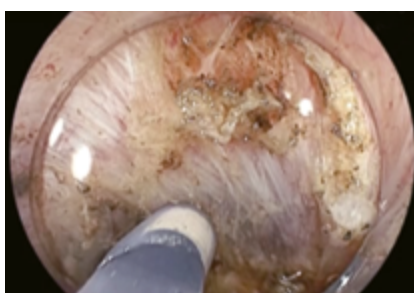
2. Water jet



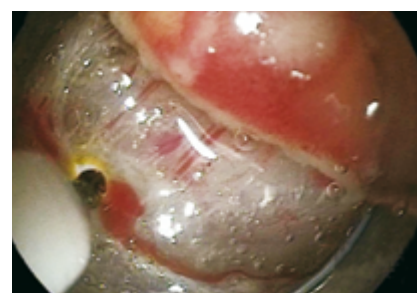
3. Mucosal incision



4. Submucosal dissection



5. Submucosal supply



6. Coagulation

Recommended applications*

Diameter	1 mm	1.5 mm	2 mm	2.5 mm	3 mm
Oesophagus	○	◎	◎	△	△
Stomach	○	◎	◎	◎	○
Colon	○	◎	◎	△	△

◎ Best indication

○ Possible Use

△ Indicated in certain cases

* Examples of the suitable protruding lengths are suggested by Takashi Toyonaga M.D. of Kobe University Hospital.

A physician must take into consideration each particular condition of the area or lesion to be dissected when selecting a protruding knife length.

TRACMOTION

Precise movement, faster procedures

TRACMOTION



To simplify the lesion extraction process, Fujifilm has developed the TRACMOTION traction device for ESD. It is designed to potentially facilitate enhanced visualisation.

It is expected to simplify the lesion excision process to allow for greater control and manoeuvrability during ESD procedures. TRACMOTION is equipped with 360° rotatable jaws, enabling easy grasping and re-grasping of large lesions.

360° ROTABLE JAWS

NO LOCKING MECHANISM NEEDED

POTENTIAL FOR BETTER VISUALISATION

SINGLE OPERATOR CAPABILITY



TRACMOTION SINGLE OPERATOR ESD TRACTION DEVICE



Model	Material code	Ø Outer, insertion portion (mm)	Working length (mm)	Compatible endoscope
GF3612RT	16747076	3.6	1,260	EI-740D/S and dual channel endoscopes with 3.7 mm minimum instrument channel diameter and 1,030 mm working length



GF3612RT

Compatibility with dual channel endoscopes

TRACMOTION is designed to work simultaneously and unobtrusively with an ESD knife using a dual channel endoscope. It is compatible with the Fujifilm EI-740D/S dual channel endoscope as well as other dual channel endoscopes that have one 3.7 mm (or larger) instrument channel and a working length of 1,260 mm.

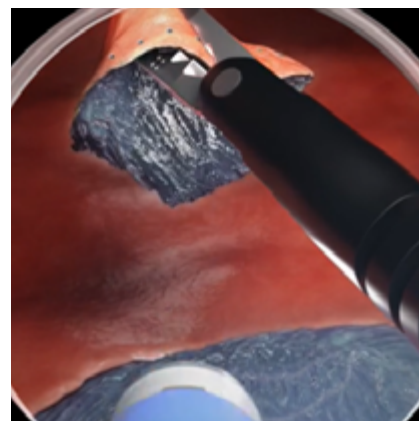
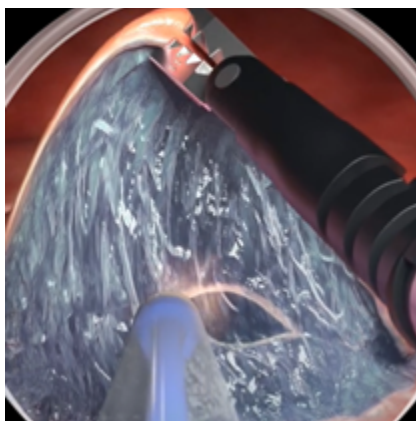
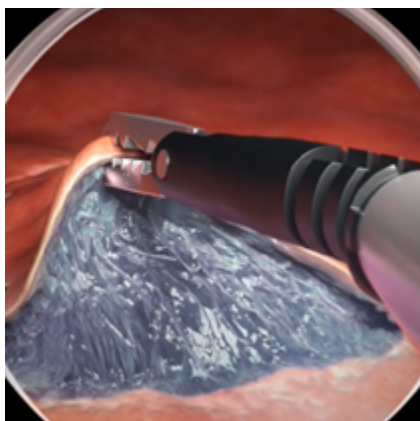
With TRACMOTION, ESD also is expected to be performed in retroflexion to further enhance visualisation in challenging anatomy.

Simplifying ESD

With TRACMOTION, an endoscopist uses simple single-hand movements to control the distal end of the product, independent of the endoscope's movement. TRACMOTION can hold tissue during ESD without complicated locking mechanisms, potentially adding efficiency during this advanced procedure.

In addition, performing ESD with TRACMOTION is expected to allow for en bloc extraction while reducing the amount of lifting agent, the number of device exchanges, and the procedure time.

As an intuitive retraction tool, TRACMOTION simplifies the lesion extraction process, and offers the potential to endoscopists to reduce their time in both learning and performing ESD procedures.



JW-3 WATER PUMP



Advanced piping technology enables water flow to be quickly stopped. The one litre water bottle enables prolonged water use and minimises the need for constant refilling.

Water jet system and rotatable water supply port

The water jet channel of the FlushKnife keeps the tip of the knife clean by washing off debris and lesion tissue adhering to the tip, thereby maintaining the sharpness of the knife throughout the treatment. Additionally, it has the function of injecting into the submucosal layer. The rotatable water supply port allows comfortable usage of both tube and syringe connections.



Design Award Winner

JW-3 Water Pump



reddot winner 2022



WATER PUMP ACCESSORIES

Product name	Material code	Where to use	Characteristics	Total tube length (mm)	Unit
JT-3RC Instrument channel tube	16642836	Instrument channel (mode A)	Suction/irrigation tubing, reusable	2,230	1
JT-3RC2 Instrument channel-joint tube	16642850	Instrument channel (mode A)	Suction/irrigation tubing, reusable	195	5
JT-3DC Disposable instrument channel tube	16642862	Instrument channel (mode A)	Endoscopic insufflation tubing set, single-use	2,065	10
JT-3RW Water jet tube	16642848	Water jet (mode B)	Suction/irrigation tubing, reusable	1,340 Luer connector	2
JT-3DW Disposable water jet tube	16642874	Water jet (mode B)	Endoscopic insufflation tubing set, single-use	1,330 Luer connector	10
JT-3DT Disposable therapeutic tube	16642886	Therapeutic device (mode C)	Endoscopic insufflation tubing set, single-use	3,350 Luer connector	10
WT-3JW Water tank	16642824	Water tank	Surgical irrigation pump		2



JT-3RC



JT-3RC2



JT-3DC



WT-3JW



JT-3RW



JT-3DW



JT-3DT

For infection prevention and safety

Autoclavable tubes and water tank, disposable tubes

Both tubes (JT-3RC, JT-3RC2, and JT-3RW) and water tank are autoclavable for effective sterilisation and are re-usable. In addition, sterilised disposable tube (JT-3DC, JT-3DW, and JT-3DT) can be selected in view of infection management.

A line-up for therapeutic device (FlushKnife Slim: DK2620JI and DK2623JI) connection tube capable of submucosal supply

JT-3DT, designed for therapeutic device (FlushKnife Slim: DK2620JI and DK2623JI) is a disposable tube that connects to a saline bag via a port connector.

By combining this tube with FlushKnife Slim: DK2620JI and DK2623JI, it's possible to supply saline solution into the submucosal layer during ESD treatment.



Tip of JT-3DT to connection to saline bag

For safety use, to avoid human error

If the cover of the pump head is opened during operation, operation is automatically stopped to protect users from injuries and accidents. The tube detector automatically recognises which tube is in use.

In consideration of safety use, the maximum flow rate is set for each tube. During continuous flow, the water supply is automatically stopped after a set duration for each type of detected tube, thus avoiding an incidence of human error.

Max. water flow rate and automatic cut-off timer

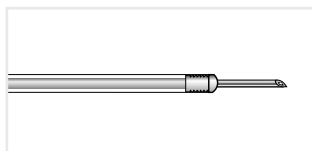
Tube type	Max. water flow rate	Automatic cut-off timer
A: Instrument channel tube	840 ml/min.	approx. 20 seconds
B: Water jet tube	220 ml/min.	approx. 20 seconds
C: Disposable therapeutic tube	209 ml/min.	approx. 8 seconds

MANTA INJECTION NEEDLES*



Manta ensures reliable retraction and extension of the needle, even in sharply angulated device positions, and prevents feared damage to the working channel. Maximum kink-resistance and single handed operation ease the application.

Product code	Material code	Characteristics	Ø Needle Needle length (mm)	Length (mm)	Ø Working channel (mm)	Unit
INJ1-A3-05-5-18-240	70100146666	Latching mechanism, distal needle guide, suitable with Histoacryl	0.5 (25 Gauge) 5	2,400	2.0	5
INJ1-A3-07-5-18-240	70100146657	Latching mechanism, distal needle guide, suitable with Histoacryl	0.7 (23 Gauge) 5	2,400	2.0	5



INJ1-A3

PURASTAT HAEMOSTAT

THIRD PARTY PRODUCT

PuraStat is a slightly viscous peptide solution which is approved to manage intraprocedural bleeding and reduce delayed bleeding (following ESD in the colon). When in contact with physiological fluids, the synthetic peptides self-assemble into a 3-dimensional matrix, resulting in effective haemostasis. PuraStat comes in a ready-to-use syringe. It is transparent, can be left in place and is suitable for use alongside other modalities, including coagulation and clips.

Product code	Material code	Characteristics	Unit
PURASTAT 1 ml 621-043 DE**	70100165774	Haemostatic gel 1ml syringe	1
PURASTAT 3 ml 621-044 DE**	70100165772	Haemostatic gel 3ml syringe	1
PURASTAT 5 ml 621-045 DE**	70100165773	Haemostatic gel 5ml syringe	1
PURASTAT 1ml 621-073	70100166745	Haemostatic gel 1ml syringe	1
PURASTAT 3ml 621-074	70100166746	Haemostatic gel 3ml syringe	1
PURASTAT 5ml 621-075	70100166752	Haemostatic gel 5ml syringe	1
PURASTAT Nozzle System Type-E	70100145376	Haemostatic gel catheter	5



Regional availability may vary, please contact your local distribution partner for further information. PuraStat is a trademark for 3-D Matrix.

* Manufactured by FUJIFILM medwork GmbH, Germany.
 ** Product code valid for Germany only.

HAEMOSTASIS CLIPS*

THIRD PARTY PRODUCT 

Introducing the AGS haemostasis clips designed to provide a simple solution for haemostasis and wound closure in the gastrointestinal tract.

- **Opening widths:** 9 mm, 11 mm, 13 mm and 16 mm
- **Jaw Angles:** 135° for effective bleeding control, 90° optimised for wound closure
- **Rotatable:** Allows for precise clip placement
- **Repositionable:** Open/close function
- **Removable:** The clip has a simple release mechanism for releasing the clip after placement, whether that be for temporary placement or misplacement of the clip

Product code	Material code	Characteristics	Opening width (mm)	Working length (mm)	Ø Working channel (mm)	Unit
AG-5108-2300-090-9	70100158091	Coated, jaw tip angle 90°	9	2,300	2.8	10
AG-5108-2300-135-9	70100158092	Coated, jaw tip angle 135°	9	2,300	2.8	10
AG-5103-2300-090	70100161926	Not coated, jaw tip angle 90°	11	2,300	2.8	10
AG-5103-2300-135	70100158089	Not coated, jaw tip angle 135°	11	2,300	2.8	10
AG-5104-2300-090	70100158090	Coated, jaw tip angle 90°	11	2,300	2.8	10
AG-5104-2300-135	70100158088	Coated, jaw tip angle 135°	11	2,300	2.8	10
AG-51018-2300-090-13	70100158093	Coated, jaw tip angle 90°	13	2,300	2.8	10
AG-51018-2300-135-13	70100158094	Coated, jaw tip angle 135°	13	2,300	2.8	25
AG-51043-2300-090-16	70100161925	Not coated, jaw tip angle 90°	16	2,300	2.8	10
AG-51043-2300-135-16	70100158097	Not coated, jaw tip angle 135°	16	2,300	2.8	25
AG-51044-2300-090-16	70100158095	Coated, jaw tip angle 90°	16	2,300	2.8	10
AG-51044-2300-135-16	70100158096	Coated, jaw tip angle 135°	16	2,300	2.8	25



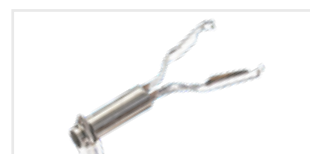
Wide opening length, short remaining part



Synchronised rotation



Repositionable

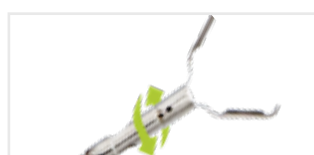


Removable**

NEW RELOADABLE CLIPS*

THIRD PARTY PRODUCT 

Product code	Material code	Characteristics	Opening width (mm)	Working length (mm)	Ø Working channel (mm)	Unit
AG-55501-2300-090-11	70100168104	1x pre-loaded-clip, jaw tip angle 90°	11	2,300	2.8	10
AG-55501-2300-135-11	70100168105	1x pre-loaded-clip, jaw tip angle 135°	11	2,300	2.8	10
AG-55501-2300-090-16	70100168095	1x pre-loaded-clip, jaw tip angle 90°	16	2,300	2.8	10
AG-55501-2300-135-16	70100168102	1x pre-loaded-clip, jaw tip angle 135°	16	2,300	2.8	10
AG-55501-1650-090-11	70100168098	1x pre-loaded-clip, jaw tip angle 90°	11	1,650	2.8	10
AG-55501-1650-135-11	70100168099	1x pre-loaded-clip, jaw tip angle 135°	11	1,650	2.8	10
AG-55501-1650-90-16	70100168100	1x pre-loaded-clip, jaw tip angle 90°	16	1,650	2.8	10
AG-55501-1650-135-16	70100168101	1x pre-loaded-clip, jaw tip angle 135°	16	1,650	2.8	10
AG-55503-0000-090-11	70100168097	Cartridges, jaw tip angle 90°	11			25
AG-55503-0000-135-11	70100168097	Cartridges, jaw tip angle 135°	11			25
AG-55503-0000-090-16	70100168094	Cartridges, jaw tip angle 90°	16			25
AG-55503-0000-135-16	70100168096	Cartridges, jaw tip angle 135°	16			25



Synchronised rotation



Repositionable



Easy & rapid clip exchange



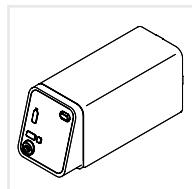
Different opening lengths

* Manufactured by Hangzhou AGS Medtech Co., LTD, China. Regional availability may vary, please contact your local distribution partner for further information.
 ** Select a snare dedicated to clip removal with wire diameter between 0.36 mm – 0.41 mm, closing the snare in to the groove of the clip's tail.

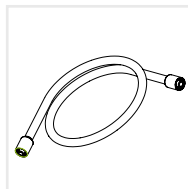
GW-100 CO₂ INSUFFLATOR

Fast resorption of insufflated CO₂ for patient friendly examinations

- Direct connection to the hospitals' medical CO₂ pipeline as well as to medical CO₂ cylinder
- Easy-to-use CO₂ flow rate switching function and compact design
- 2 controlled flow rate settings



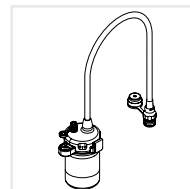
GW-100 Main Unit



CT-11G Gas Tube
Standard Accessory



WT-04G Gas / Water
Tank for 500 / 600 series
endoscopes



WT-604G Water Tank
for ELUXEO 700 series

Tube sets for the connection of GW-100 to the medical gas pipeline and medical gas cylinders are available.

Suitable endoscopes for ESD*

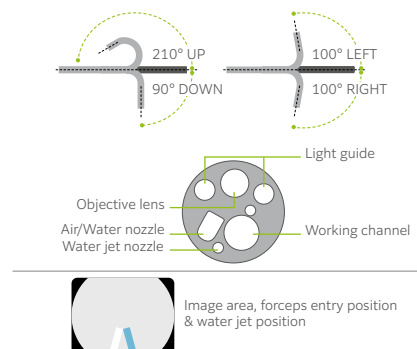
EG-760R ELUXEO VIDEO GASTROSCOPE Routine type



This routine gastroscope from the ELUXEO 760 series is equipped with CMOS technology and provides HD images and videos for daily practice. Close Focus allows observation from as little as 2 mm in depth.



Field of view	140°
Observation range	2 – 100mm
Bending capability	Up 210°/Down 90° Right 100°/Left 100°
Ø Distal end	9.2 mm
Ø Flexible portion	9.3 mm
Ø Working channel	2.8 mm
Working length	1,100 mm
Total length	1,400 mm



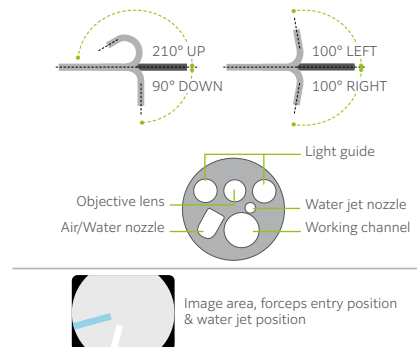
EG-760Z ELUXEO VIDEO GASTROSCOPE Optical magnification



This zoom gastroscope features the well-known 145x Multi Zoom** which leads to clear and more detailed visualisation, supporting deeper analysis of mucosal structures. It has a small bending radius and similar functionality to the routine gastroscope including all features.



Field of view	Normal 140°/ Close 56°
Observation range	1.5 – 100mm Normal 3 – 100mm Close 1.5 – 2.5 mm
Bending capability	Up 210°/Down 90° Right 100°/Left 100°
Ø Distal end	9.9 mm
Ø Flexible portion	9.8 mm
Ø Working channel	2.8 mm
Working length	1,100 mm
Total length	1,400 mm



* This overview offers recommendations and does not purport to be complete.
** In combination with 26" screen.

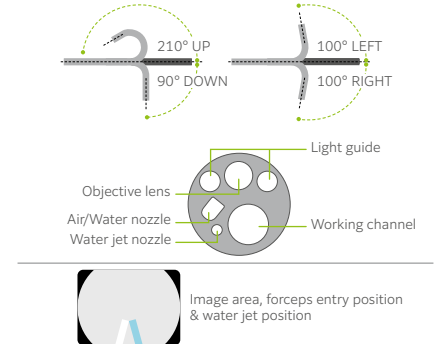
EG-760CT ELUXEO VIDEO GASTROSCOPE Therapeutic type



This gastroscope from the ELUXEO 760 series is equipped with a large 3.8 mm working channel that is especially suitable for therapeutic procedures.



Field of view	Normal 140°
Observation range	2 – 100 mm
Bending capability	Up 210°/Down 90° Right 100°/Left 100°
Ø Distal end	10.5 mm
Ø Flexible portion	10.8 mm
Ø Working channel	3.8 mm
Working length	1,100 mm
Total length	1,400 mm



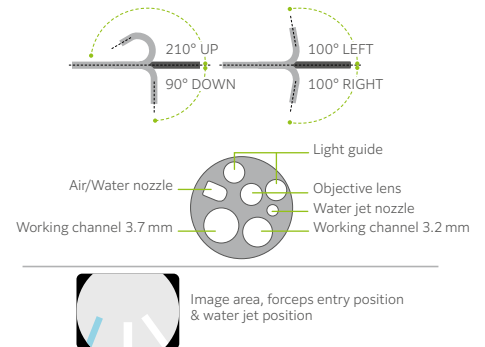
EI-740D/S ELUXEO VIDEO GASTROSCOPE & SIGMOIDOSCOPE Dual channel



The ELUXEO EI-740D/S is intended for use in both the upper gastrointestinal tract and sigmoid colon and combines the former EG-530D gastroscope, and ES-530WE sigmoidoscope in one exceptional endoscope. With its two instrument channels (3.7 and 3.2 mm) and improved suction performance, it is especially suitable for various therapeutic procedures.



Field of view	140°
Observation range	3 – 100mm
Bending capability	Up 210°/Down 90° Right 100°/Left 100°
Ø Distal end	12.8 mm
Ø Insertion tube	12.8 mm
Ø Working channel	3.7 mm/3.2 mm
Working length	1,030 mm
Total length	1,330 mm

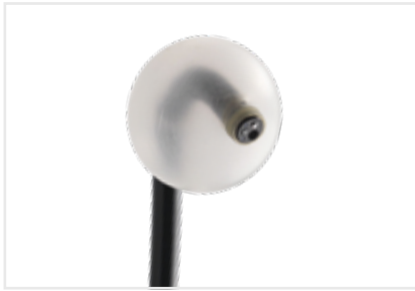


Large dual instrument channels

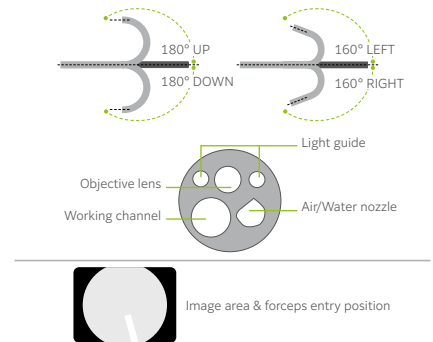
Compared to the 530 series dual instrument channel endoscopes, the EI-740D/S endoscope has an improved instrument channel capacity. The smaller instrument channel is increased from 2.8 to 3.2 mm, therefore providing an 3.2 and 3.7 mm dual instrument channel configuration. By accommodating two endotherapeutic devices simultaneously, the endoscope allows for a broader range of therapeutic possibilities.



EI-580BT SHORT DOUBLE BALLOON ENDOSCOPE



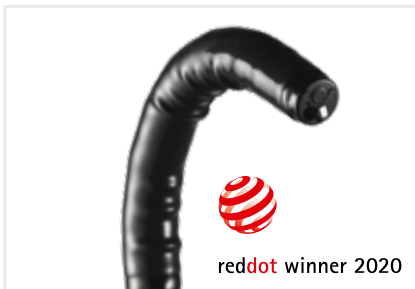
Viewing direction	0° (Forward)
Field of view	140°
Observation range	2 – 100 mm
Bending capability	Up 180°/Down 180° Right 160°/Left 160°
Ø Distal end	9.4 mm
Ø Flexible portion	9.3 mm
Ø Working channel	3.2 mm
Working length	1,550 mm
Total length	1,850 mm



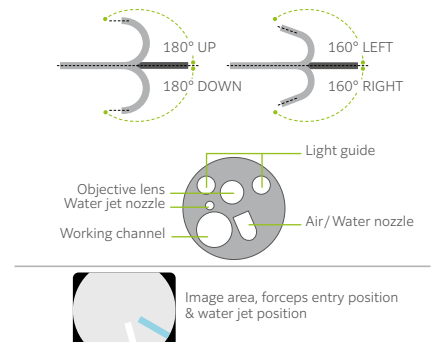
EC-760ZP-V/M, L ELUXEO VIDEO COLONOSCOPE Optical magnification



The slim zoom colonoscope features the brilliant and easy-to-operate Multi Zoom with 145x maximum magnification*. Together with BLI, details of the mucosal and vascular patterns become visible. Like the routine endoscope, it features the full range of functionalities including flexible adjustment even with the slim diameter of 11.8 mm.



Field of view	Normal 140°/ Close 56°
Observation range	1.5 – 100 mm Normal 3 – 100 mm Close 1.5 – 2.5 mm
Bending capability	Up 180°/Down 180° Right 160°/Left 160°
Ø Distal end	11.7 mm
Ø Flexible portion	11.8 mm
Ø Working channel	3.2 mm
Working length	1,330/1,690 mm
Total length	1,650/2,010 mm



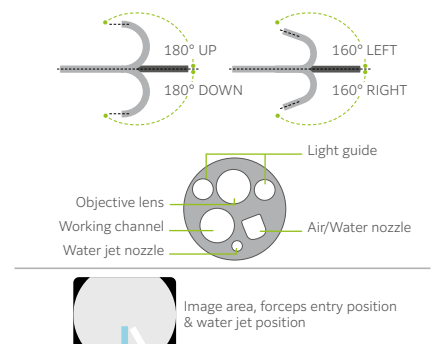
EC-760P-V/M, L ELUXEO VIDEO COLONOSCOPE Ultra slim type



This ultra slim colonoscope from the ELUXEO 760 series has a distal end diameter of only 11.1mm and is therefore expected to be useful for narrow GI anatomy, cases featuring stenosis and therapeutic use. A wide 170° field of view enables a visualisation even in hard-to-observe areas. It features the G7 grip and the Flexibility Adjuster for easier insertion.



Field of view	170°
Observation range	2 – 100 mm
Bending capability	Up 180°/Down 180° Right 160°/Left 160°
Ø Distal end	11.1 mm
Ø Flexible portion	11.5 mm
Ø Working channel	3.2 mm
Working length	1,330/1,690 mm
Total length	1,650/2,010 mm

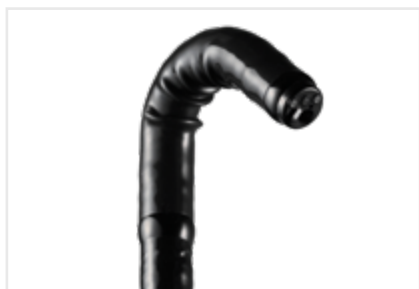


* In combination with 26" screen.

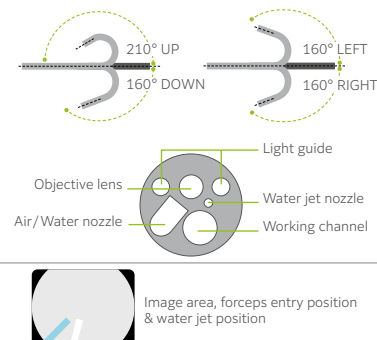
EC-740T/M, L ELUXEO VIDEO COLONOSCOPE Slim & treatment type



This slim colonoscope is equipped with Advanced Force Transmission, 210° up-angulation and a G7 grip that supports excellent manoeuvrability. It is expected to be useful for more challenging anatomies and narrow GI anatomy, such as stenosis, severe inflammation, or anatomical adhesion. With the additional observation modes LCI, intended to improve detection, and BLI, intended to characterise lesions, this is an excellent colonoscope for both observation and therapeutic procedures.



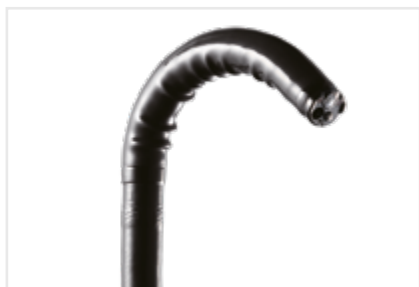
Field of view	140°
Observation range	3 – 100 mm
Bending capability	Up 210°/Down 160° Right 160°/Left 160°
Ø Distal end	9.8 mm
Ø Flexible portion	10.7 mm
Ø Working channel	3.2 mm
Working length	1,330/1,690 mm
Total length	1,630/1,990 mm



EC-760S-A/M, L ELUXEO VIDEO COLONOSCOPE with virtual scale

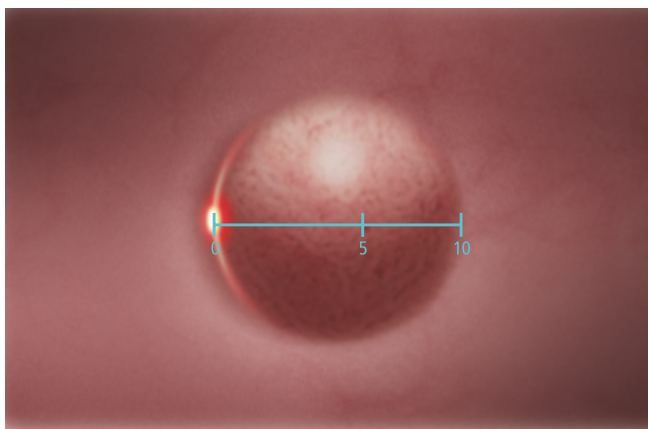
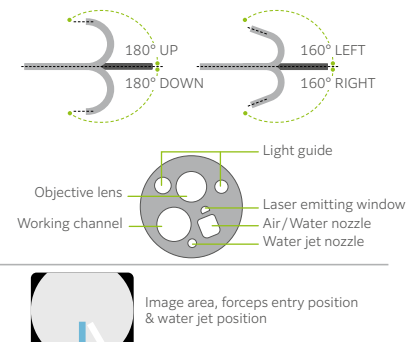


To enable virtual scale functionality, the EC-760S-A/M and EC-760S-A/L colonoscopes are equipped with a red laser, which must be used in combination with SCALE EYE software EW10-VM01 and EX-1 hardware. SCALE EYE can be used in combination with White Light or LCI mode and with CAD EYE.



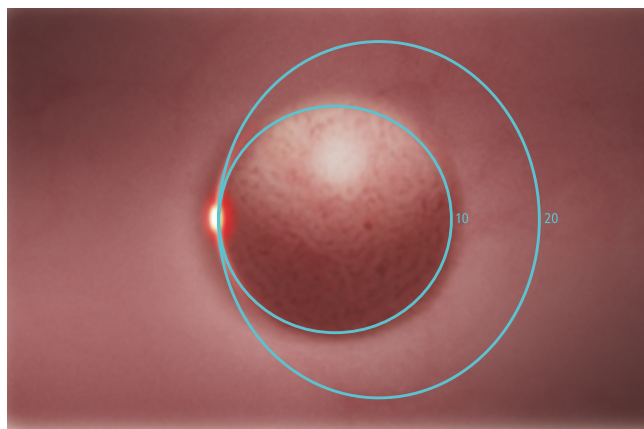
A unique symbol for the endoscope with "Visualizer"

Field of view	170°
Observation range	2 – 100 mm
Bending capability	Up 180°/Down 180° Right 160°/Left 160°
Ø Distal end	12.8 mm
Ø Insertion tube	12.8 mm
Ø Working channel	3.8 mm
Working length	1,330/1,690 mm
Total length	1,650/2,010 mm
Virtual Scale	Compatible



Line 5-10 mm

Scale intervals can be set for 5, 10 and 20 mm for both scale designs



Circle 10-20 mm

BL-7000 & VP-7000

For demanding procedures

Our long-standing experience in developing imaging technologies also provides you with an excellent processor for your application at all times.

All models offer digital image processing and video interfaces. With ergonomic user controls, these video processors save valuable time and facilitate more comfortable examinations.

Video Processor VP-7000



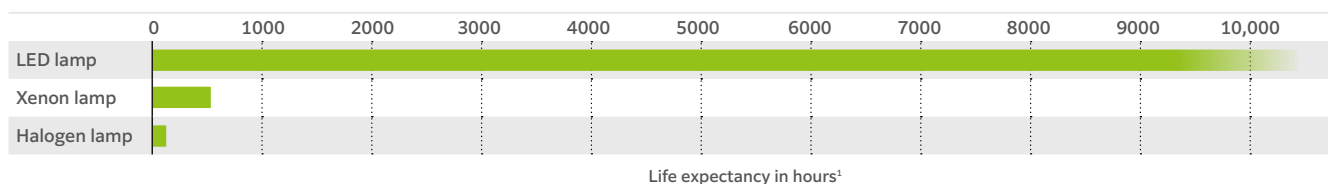
Light Source BL-7000



BL-7000 ELUXEO 4-LED LIGHT SOURCE with high durability

A reliable light source is a prerequisite for use in large clinics as well as smaller outpatient centres to ensure procedures can take place as scheduled. To achieve high image quality standards, the ELUXEO 7000 system features the 4-LED Multi Light source, which outperforms conventional Xenon or Halogen light sources: With 10,000 hours¹ average life expectancy for the LED lights, the ELUXEO system has far longer durability while having much lower energy consumption, resulting in better cost-efficiency.

Light source	4-LED
Air supply pump	High, Mid, Low, Off
Power rating	100 – 240V, 50/60Hz, 1.2 – 0.7A
Dimensions (W x H x D)	390 x 155 x 485 mm (including projection)
Weight	12.0 kg
Optical radiation safety	Class 1 LED product



Durability warranty

Our confidence in the ELUXEO system BL-7000 is reflected by Fujifilm's durability warranty, which covers any defect of the LED light source unit that is attributable to a manufacturing or assembly fault under normal use for a period of five years or 10,000 operating hours, whichever comes first.¹

VP-7000 ELUXEO HIGH-PERFORMANCE VIDEO PROCESSOR



The ELUXEO video processor VP-7000 enables you to make use of the many features provided by Fujifilm's wide range of endoscopes along with the 4-LED illumination system and its LCI and BLI visualisation modes. In addition to the ELUXEO 700 series endoscopes, it is also compatible with the 600 and 500 series of endoscopes.

The processor creates high-quality images displayed in full HD on the monitor. Automatic back-up mode for data storage is integrated and the processor is DICOM compatible.

Compatible endoscopes	700/600/500 series
Output	DVI-D x2, DVI-I x1, HD-SDI x2, RGB-TV x1, S VIDEO x1, VIDEO x1
Input	1 channel PoP
External memory	USB Flash Drive
Power rating	100 – 240V, 50/60Hz, 0.8 – 0.5A
Dimensions (W x H x D)	390 x 110 x 485 mm (including projection)
Weight	9.0 kg

¹ This Warranty is only valid according to the terms and conditions of the Durability Warranty Policy.

EP-6000 **ELUXEO Lite** VIDEO PROCESSOR with built-in LED light source



The ELUXEO Lite EP-6000 combines a reliable 3-LED light source with a processor that enables you to make use of the many features provided by Fujifilm's wide range of endoscopes. Available combined with the 700 series LCI (Linked Color Imaging) and BLI (Blue Light Imaging) visualisation modes.

Due to the use of economical LED lamps with a long durability this system is very eco-friendly. It is also compatible with the 600 and 500 series of endoscopes. The ELUXEO Lite EP-6000 creates quality images and videos displayed in full HD on the monitor. Automatic back-up mode for data storage is integrated and the processor is also DICOM compatible.

Light source	3-LED
Air supply pump	High, Mid, Low, Off
Compatible endoscopes	700, 600 and 500 series endoscopes*
Output	DVI-D x2, RGB-TV x1, S VIDEO x1, VIDEO x1
External memory	USB Flash Drive
Power rating	100 – 240V, 50/60Hz, 2.0 – 1.1A
Dimensions (W x H x D)	395 x 210 x 485 mm (including projection)
Weight	15.0 kg
Optical radiation safety	Class 1 LED product

Available observation modes	White Light	BLI	LCI	FICE
700 series	●	●	●	●
500/600 series	●			●



* Excluding 590 series endoscopes, EG-530UT2, EG-530UT, EG-530UR2 and EG-530UR.

Innovative training

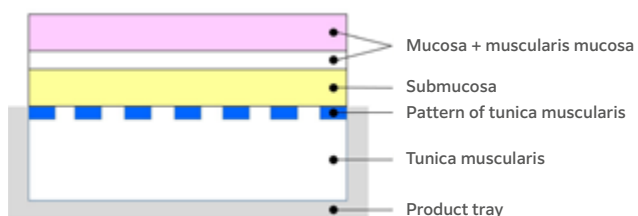
ENDOCEL TRAINING MODEL

THIRD PARTY PRODUCT 

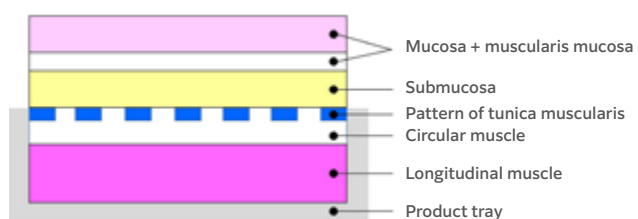
EndoGel offers clinicians a unique, non-biological and innovative training model for Endoscopic Submucosal Dissection (ESD) and Peroral Endoscopic Myotomy (POEM) procedures. EndoGel simulates the texture of human tissue involved in these procedures to help provide a life-like simulation.

Product code	Material code	Characteristics	Size W x L x H (mm)	Unit
ENDOCEL (for ESD)	70100156737	Incl. EndoGel pad; vinyl hose (tube); dedicated box to set up the EndoGel pad (outer box); dedicated box to put through the overtube	140 x 185 x 25	1
ENDOCEL (for ESD/POEM)	70100156736	Incl. EndoGel pad; vinyl hose (tube); dedicated box to set up the EndoGel pad (outer box); dedicated box to put through the overtube	140 x 185 x 25	1

Structure of EndoGel



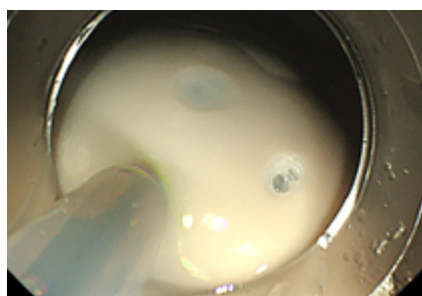
ESD model



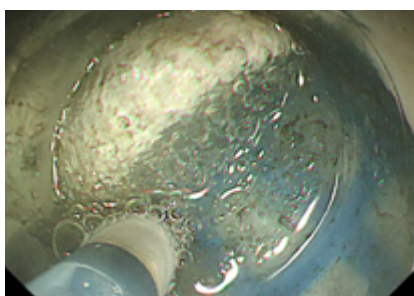
ESD / POEM model



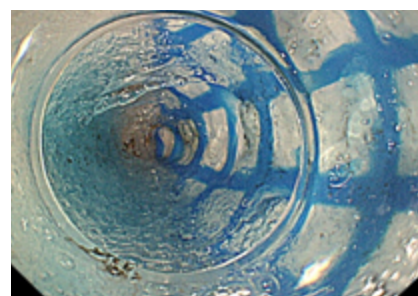
Endoscopic image



Local injection



Submucosal dissection



Forming tunnel (POEM)

* Manufactured by Sunarrow Co.,Ltd., Japan.



Manufactured and distributed by
FUJIFILM Corporation
26-30, Nishiazabu 2-chome, Minato-ku,
Tokyo 106-8620, JAPAN
www.fujifilm.com

Authorized Representative
FUJIFILM Healthcare Europe GmbH
Balcke-Dürr-Allee 6, 40882 Ratingen, Germany

Importer
FUJIFILM Europe B.V.

© 2025 FUJIFILM Healthcare Europe GmbH

This brochure may contain descriptions of optional functions and products. Specifications and appearance may be subject to change for improvement without notice. For proper use of the system, be sure to read the operating manual prior to placing it into service. The name FUJIFILM and the FUJIFILM logo are trademarks of FUJIFILM Corporation. All other trademarks shown are trademarks of their respective owners. All rights reserved. **03/2025.**